

SPEC SHEET + MEASUREMENTS

DISTRICT

District® Youth V.I.T.™ Fleece Crew. DT6104Y

Product photo



An ideal canvas for decorators, this soft fleece is everything and more at an unbeatable value.

- 8.3-ounce (280 GSM)
- 65/35 ring spun cotton/polyester, 3-end fleece
- 60/40 ring spun cotton/polyester, 3-end fleece (Heathers and Royal Frost)
- 100% ring spun cotton face (Solids, Light Heather Grey)
- Dyed-to-match twill neck tape
- 1x1 rib knit collar, cuffs and hem
- Side seamed
- Tear-away label

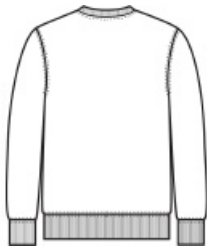
CARE INSTRUCTIONS

Machine Wash Cold With Like Colors. Only Non-Chlorine Bleach When Needed. Tumble Dry Low. Warm Iron If Necessary.

Sketches



front



back

SPEC SHEET + MEASUREMENTS



District® Youth V.I.T.™ Fleece Crew. DT6104Y

PRODUCT MEASUREMENTS

	XS	S	M	L	XL
Size	4/5	6/8	10/12	14/16	18/20
Body Length at Back	19	21	23	25	27
Chest	14	15 1/2	17	18	19 1/2
Sleeve Length from Center Back	23	26	28 1/2	31	34

Body Length at Back: Measured from high point shoulder to finished hem at back.

Chest: Measured across the chest one inch below armhole when laid flat.

Sleeve Length from Center Back: Measure from Center Back neck to shoulder point to sleeve hem.

SIZE CHARTS

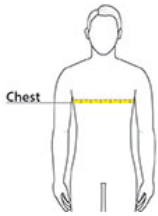
	XS	S	M	L	XL
Size	4/5	6/8	10/12	14/16	18/20
Chest	22-24	25-27	28-30	30-32	32-34

SPEC SHEET + MEASUREMENTS



District® Youth V.I.T.™ Fleece Crew. DT6104Y

HOW TO MEASURE



CHEST

Measure under the arm and around the fullest part of the chest with arms down, keeping tape horizontal.

COLORS



Black
PMS BLACK
C



Classic Red
PMS 200C



Deep Royal
PMS 7687C



Forest Green
PMS 7736C



Heathered
Charcoal



Light Heather
Grey



New Navy
PMS 533C



Royal Frost